

THIS INSTRUMENT PREPARED BY:
MICHAEL D. ROSE, P.S.M.

PARKSIDE TOWNHOMES AT DELRAY

A REPLAT OF A PORTION OF TRACTS 24, 25 AND 26, MODEL
LAND COMPANY'S SUBDIVISION OF THE NORTH HALF AND PART OF
THE SOUTH HALF OF SECTION 18, TOWNSHIP 46 SOUTH, RANGE 43 EAST,
(PLAT BOOK 6, PAGE 51, PALM BEACH COUNTY RECORDS)
CITY OF DELRAY BEACH, PALM BEACH COUNTY, FLORIDA

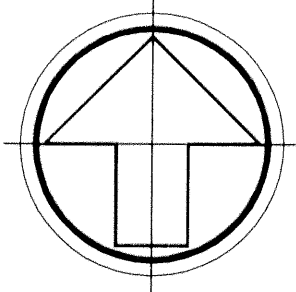
SHEET 2 OF 5 SHEETS

118

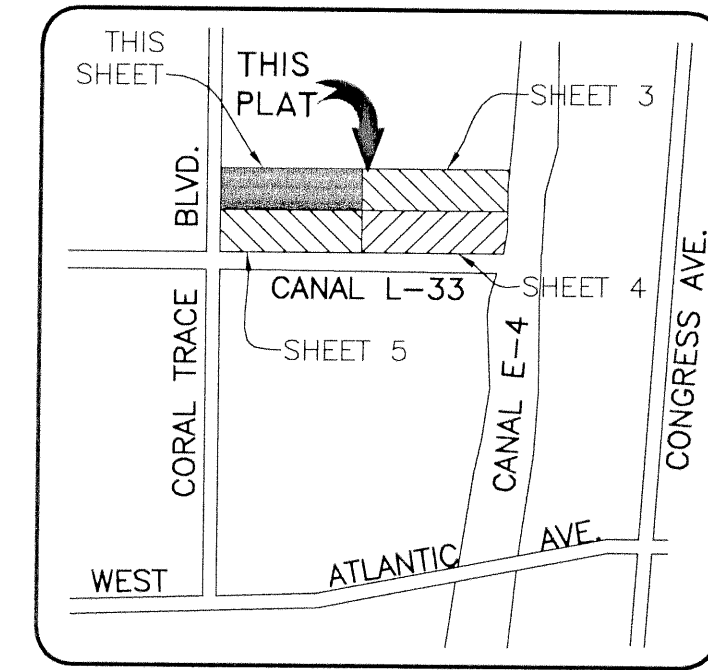
STATE OF FLORIDA SS
COUNTY OF PALM BEACH
This Plat was filed for record
at _____ M., this _____ day
of _____, 200, and duly
recorded in Plat Book No. _____
on Pages _____ and _____
DOROTHY H. WILKEN, CLERK
BY: _____ DC

SDA SHAH SURVEYING & ASSOCIATES
ENGINEERING PLANNING
CERTIFICATE OF AUTHORIZATION NO. LB6456
1885 W. Commercial Blvd., Suite 190 • Ft. Lauderdale, FL 33309
PH: 954-776-7604 • FAX: 954-776-7608

JUNE, 2000



Scale 1" = 30'



LOCATION MAP
NOT TO SCALE

MODEL LAND COMPANY'S
SUBDIVISION
PB. 6, PG. 51

HIGH POINT OF DELRAY-CONDO. ASSOC.
SECTION II (O.R. BOOK 1973 PAGE 1143)

30' DRAINAGE CANAL EASEMENT ORB. 2767, PG. 210

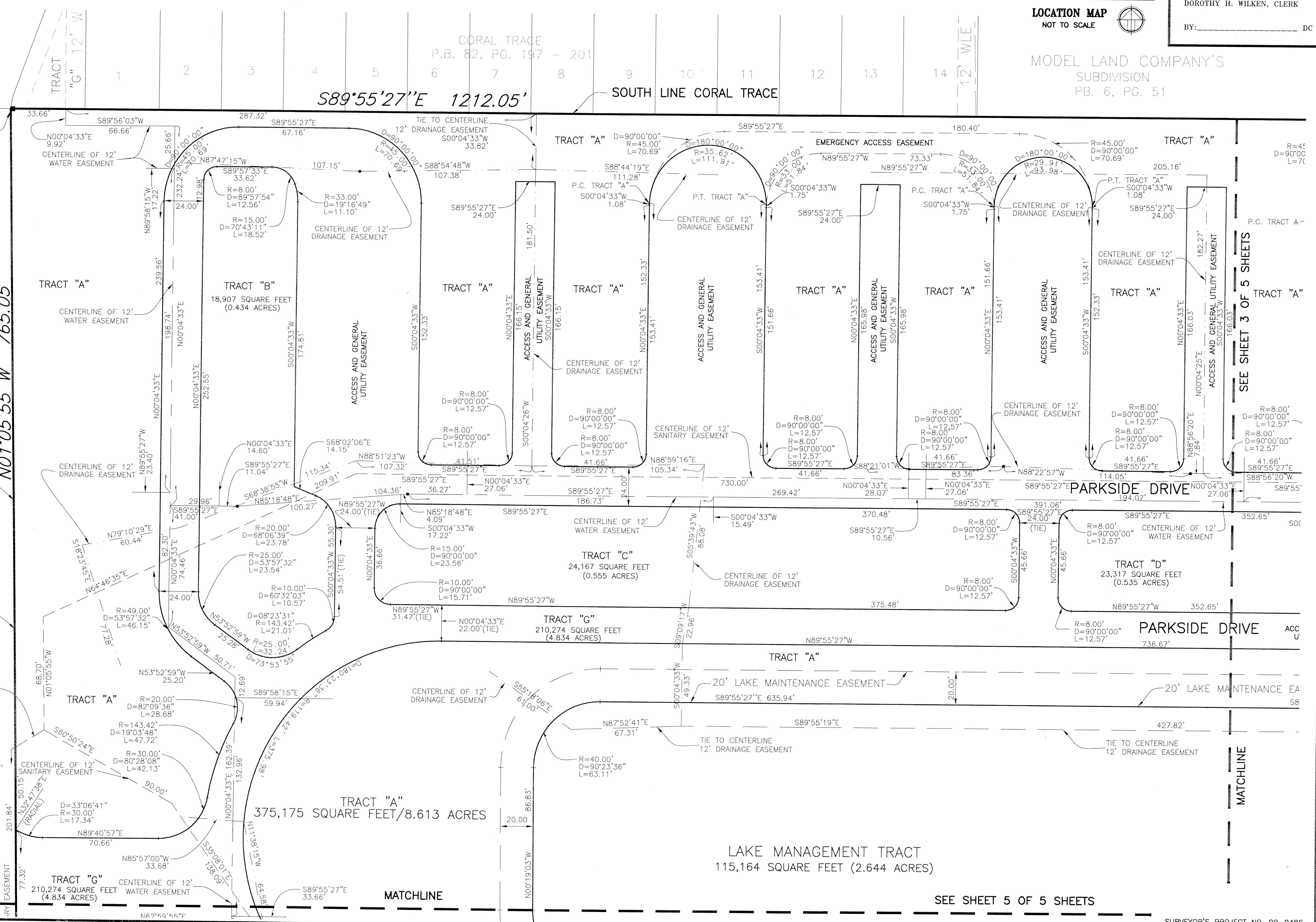
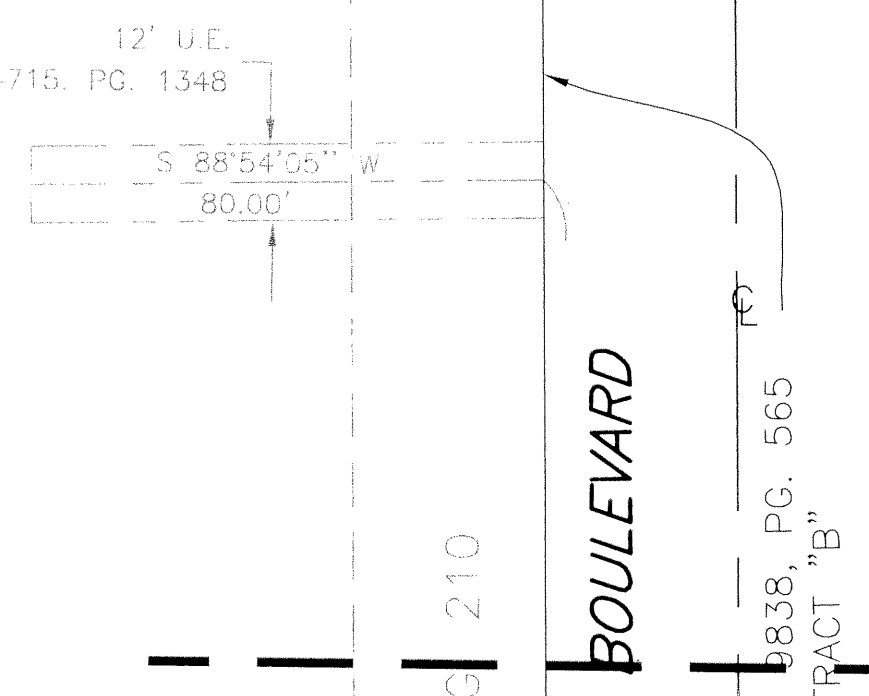
CORAL TRACE BOULEVARD

CITY OF DELRAY BEACH ORB. 9838, PG. 565

60' RIGHT-OF-WAY TRACT "B"

NO1'05'55"W 765.05'

- LEGEND:
- P.R.M. PERMANENT REFERENCE MARKER
 - GRND. GROUND
 - P.C.P. PERMANENT CONTROL POINT
 - SQ. SQUARE
 - FT. FEET
 - D. DELTA
 - R. RADIUS
 - L. ARC LENGTH
 - CH. CHORD
 - CL. CHORD LENGTH
 - D.E. DRAINAGE EASEMENT
 - U.E. UTILITY EASEMENT
 - L.S.E. LIFT STATION EASEMENT
 - L.S.A.E. LIFT STATION ACCESS EASEMENT
 - N = 802633.75 STATE PLANE COORDINATES
 - E = 948233.87 PALM BEACH COUNTY RECORDS
 - P.B.C.R. OFFICIAL RECORD BOOK
 - PG. PAGE
 - P.B. PLAT BOOK
 - T 45 TOWNSHIP
 - R 42 RANGE
 - LWDD LAKE WORTH DRAINAGE DISTRICT
 - P.C. POINT OF CURVATURE
 - P.T. POINT OF TANGENCY



SEE SHEET 3 OF 5 SHEETS

SEE SHEET 5 OF 5 SHEETS

SURVEYOR'S PROJECT NO. 99-0486